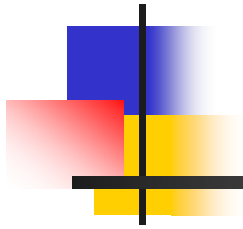


Planning for the Future



A Review of Projected Student Enrolment, Space Utilization & Budget Implications

Presented by The Board of Education of School District No. 20 (Kootenay-Columbia), January 2010



Planning for the Future Format

- Welcome & Introductions
- Purpose of the Meeting
- Presentation of Facts & Future Trends
- Next Steps
- Questions/Comments
- Adjournment



Planning for the Future

Purpose

The Board wishes to consult broadly and pro-actively with its education and community partners in order to plan for a sustainable future for our students & our communities.

- To share enrolment, space utilization, and budget projections
- To receive questions & post the questions & answers on our website
- To receive written submissions of ideas, input and suggestions of possible options to plan for the future
- To determine all viable and preferred options
- To use the above information to create a 5 year facilities plan



Planning for the Future

Why Now?

Student achievement is our district priority.

- support for diverse student learning
- quality education programs
- support for classroom teachers

Challenges

Budgets decline as enrolment declines.

Maintenance of unused space requires funds.

Expanded mandate requires funds.



Planning for the Future

Our enrolment and facility capacity
must be appropriately aligned
for greatest efficiency

because

educational program funds
compete with operational funds
for every dollar.

Planning for the Future

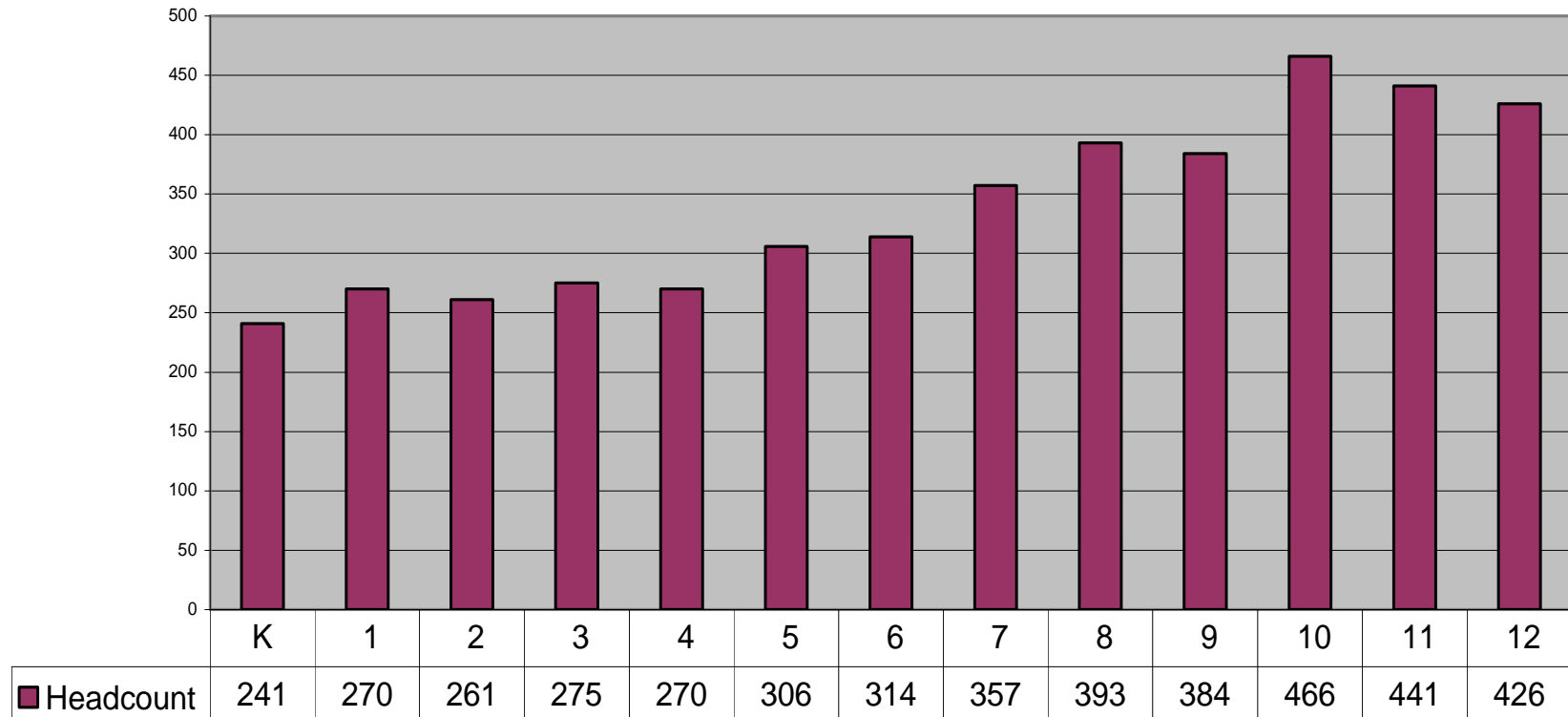


A Review of Projected Student Enrolment, Space Utilization & Budget Implications SUMMARY

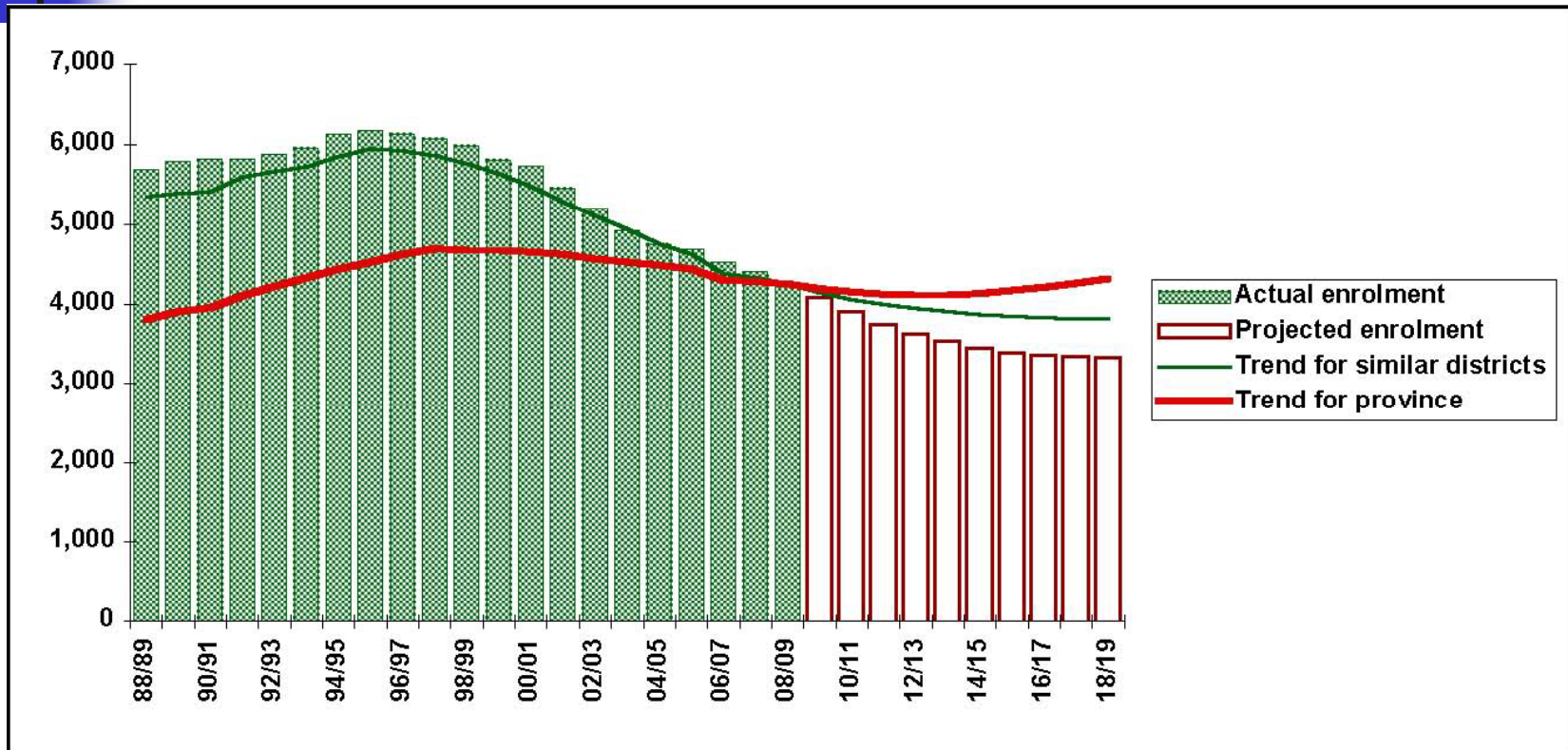
Presented by Jean Borsa January 2010

Student Enrolment Headcount 2007/2008

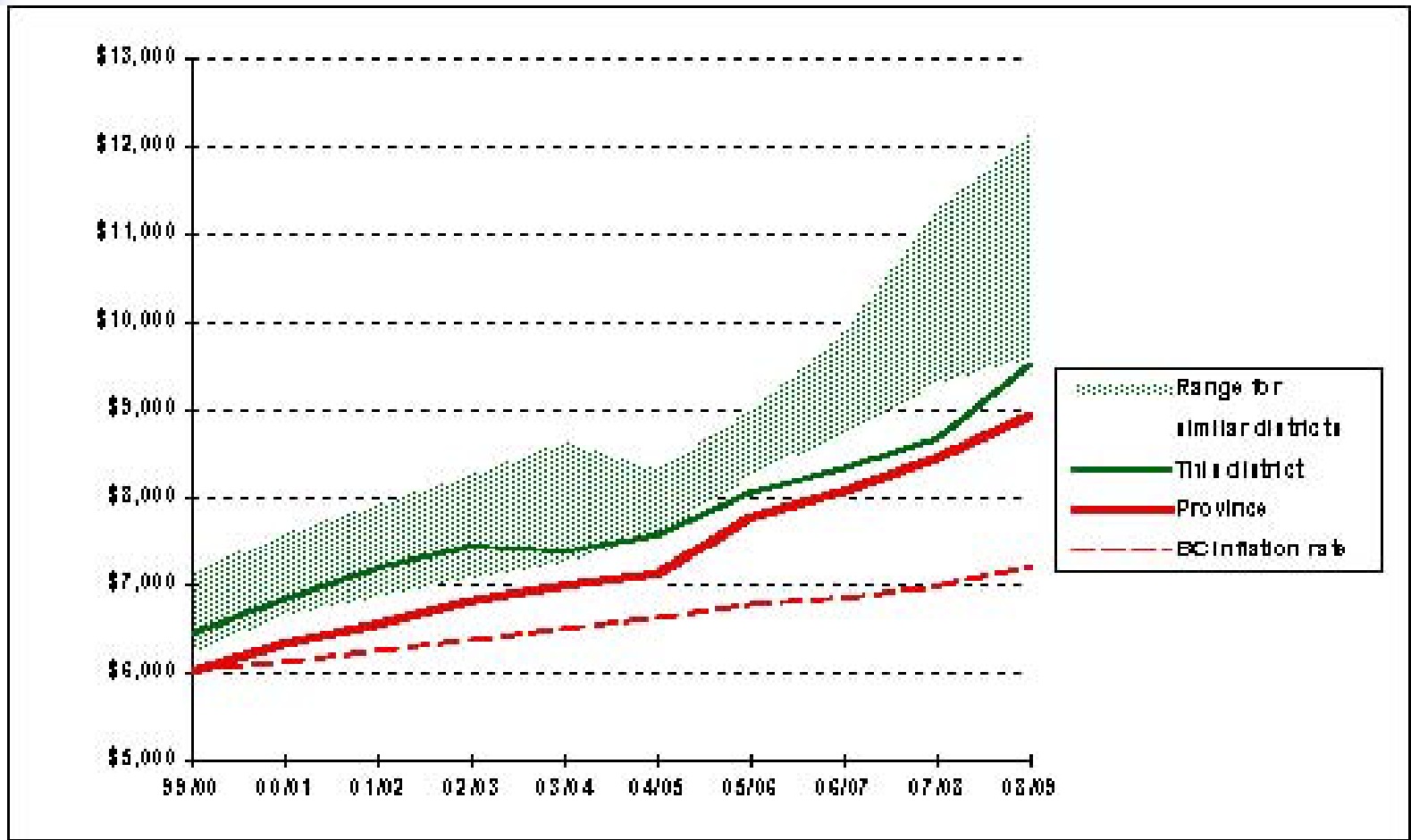
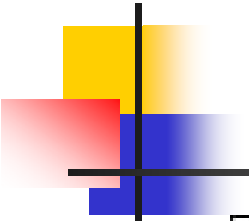
Student Enrolment Headcount 2007/2008



STUDENT ENROLMENT (HISTORICAL AND PROJECTED HEADCOUNT) 1988/89 to 2018/19



DISTRICT OPERATING EXPENDITURE PER FUNDED FTE STUDENT 1999/00 to 2008/09





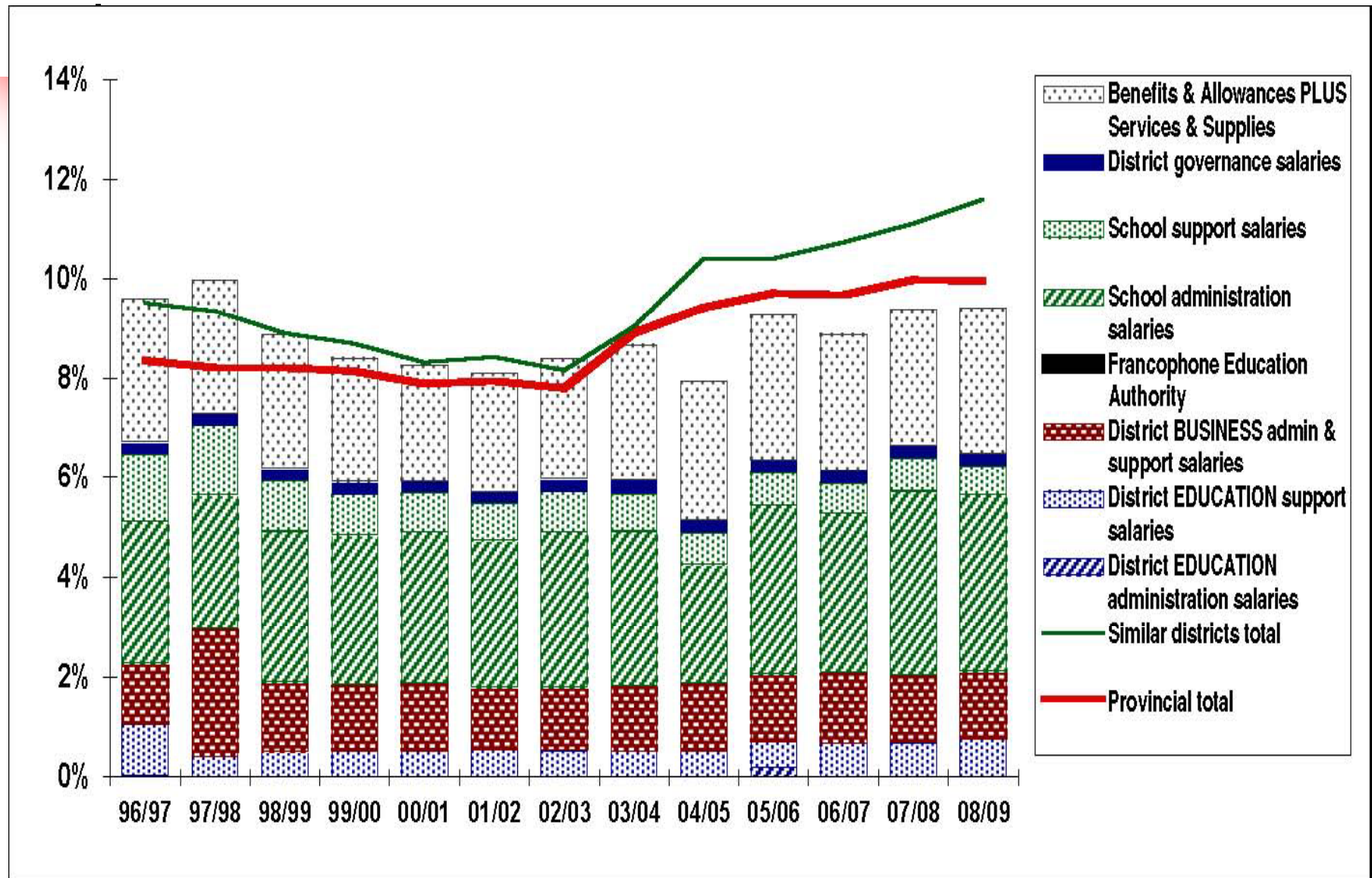
Operating Grant

Operating Grant is made up of:

■ Enrolment Funding (\$5851 per FTE)	\$23,165,456
■ Unique Student Needs:	
■ Special Education	\$ 2,208,000
■ English as a Second Language	\$ 29,350
■ Aboriginal Education	\$ 384,306
■ Adult Education	\$ 63,914
■ Supplement for Salary Differential	\$ 1,144,405
■ Supplement for Declining Enrolment	\$ 386,627
■ Labour Settlement Funding	\$ 5,047,494
■ Supplement for Unique Geographic Factors	\$ 1,933,234
■ Supplement for Transportation & Housing	\$ 1,187,350
■ Summer Learning	\$ 7,600
■ Funding Protection	\$ 438,070
■ Total Funding:	\$35,995,806

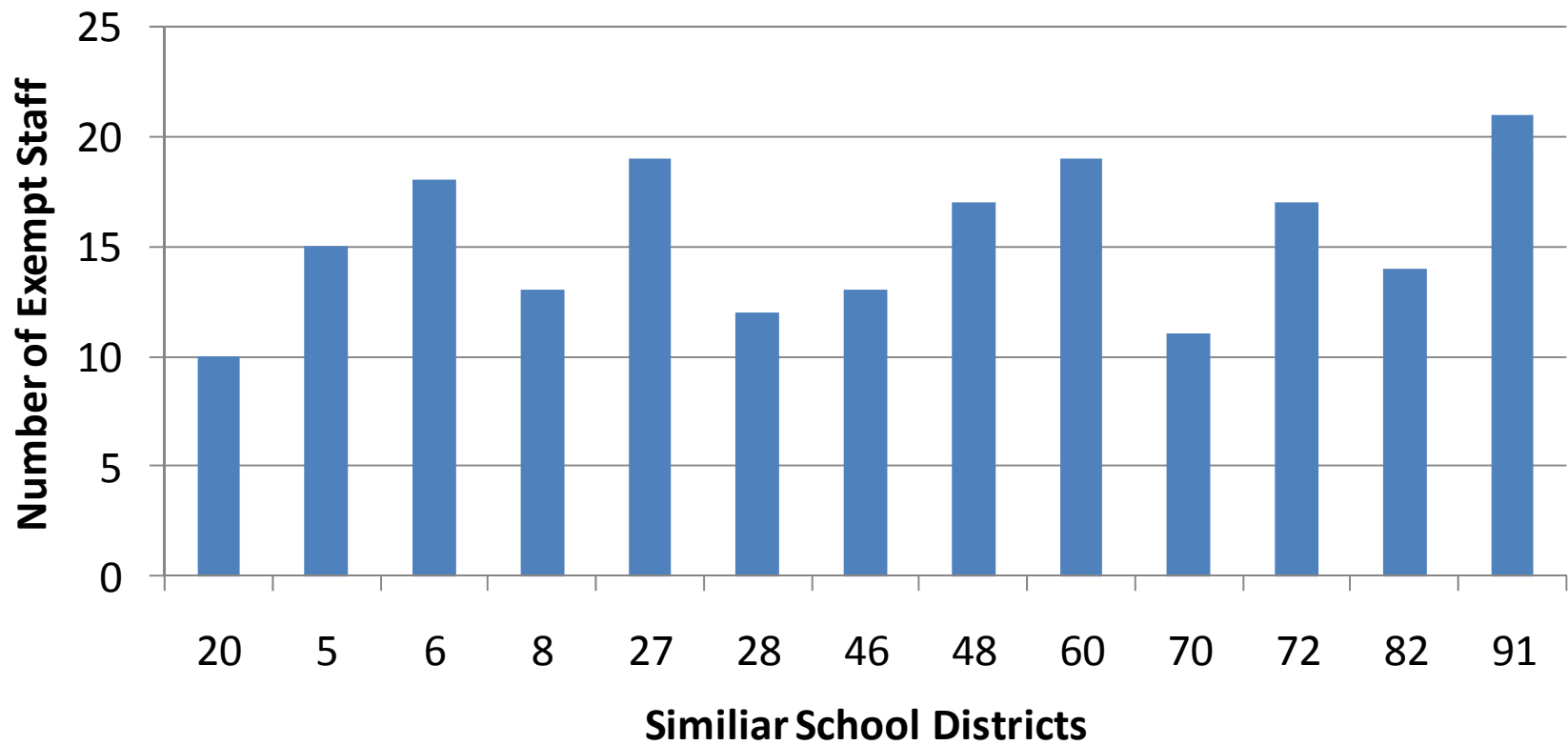
Enrolment Funding per FTE	\$ 5,851
Total Funding per FTE	\$ 9,057

ADMINISTRATIVE EXPENDITURE AS A PERCENTAGE OF BUDGETED OPERATING EXPENDITURES 1996/97 to 2008/09



District Exempt Staff

Number of Exempt Staff at Various Similiar Districts



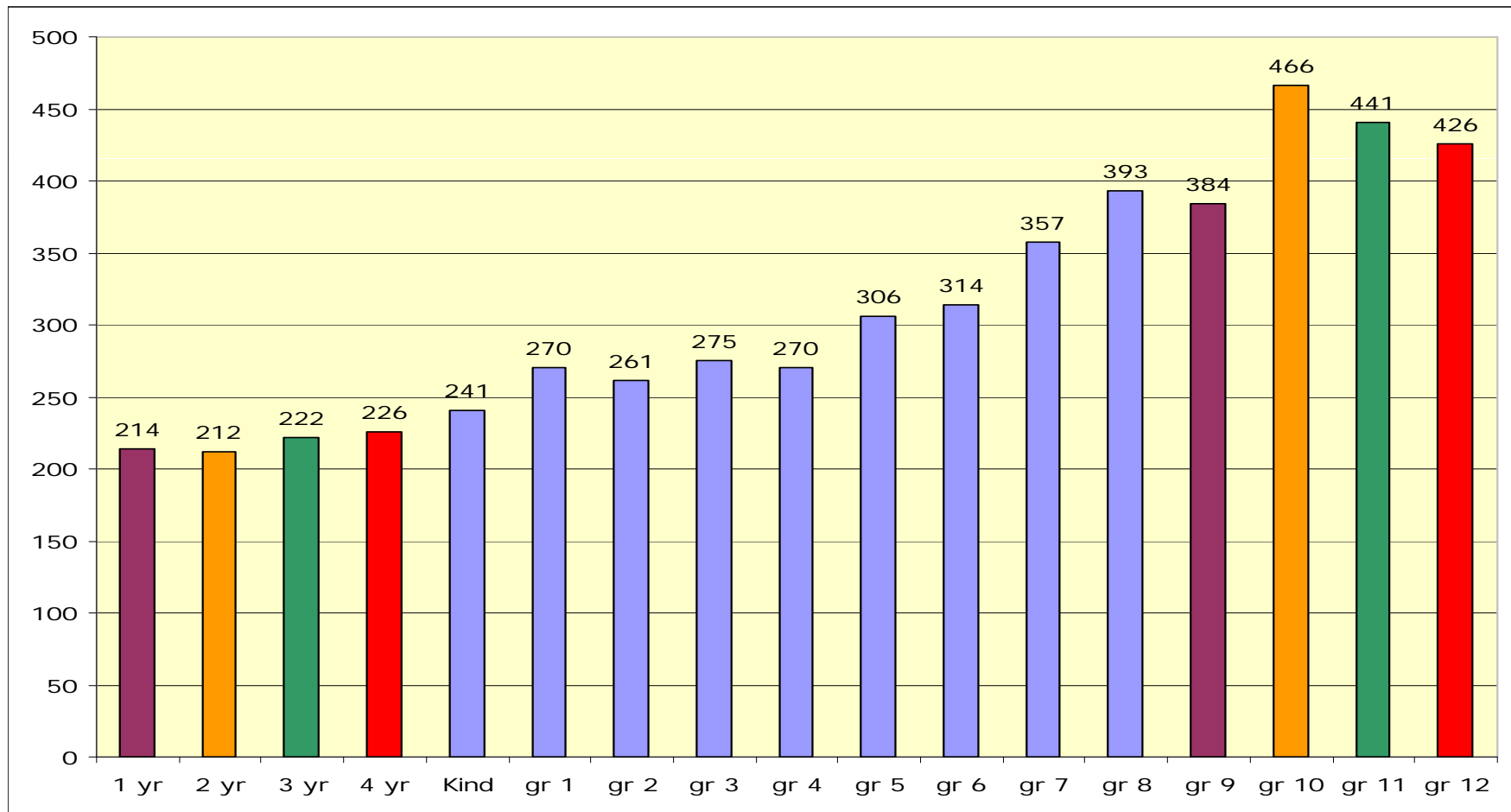


Percentage Staffing Changes from 1997/98 to 2009/10

Staff	Change
Teachers	- 31%
Principals & Vice-Principals	- 33%
Support Staff	- 15%
District Exempt	- 20%

Student Enrolment Headcount (2007-2008)

including 1-4 year olds





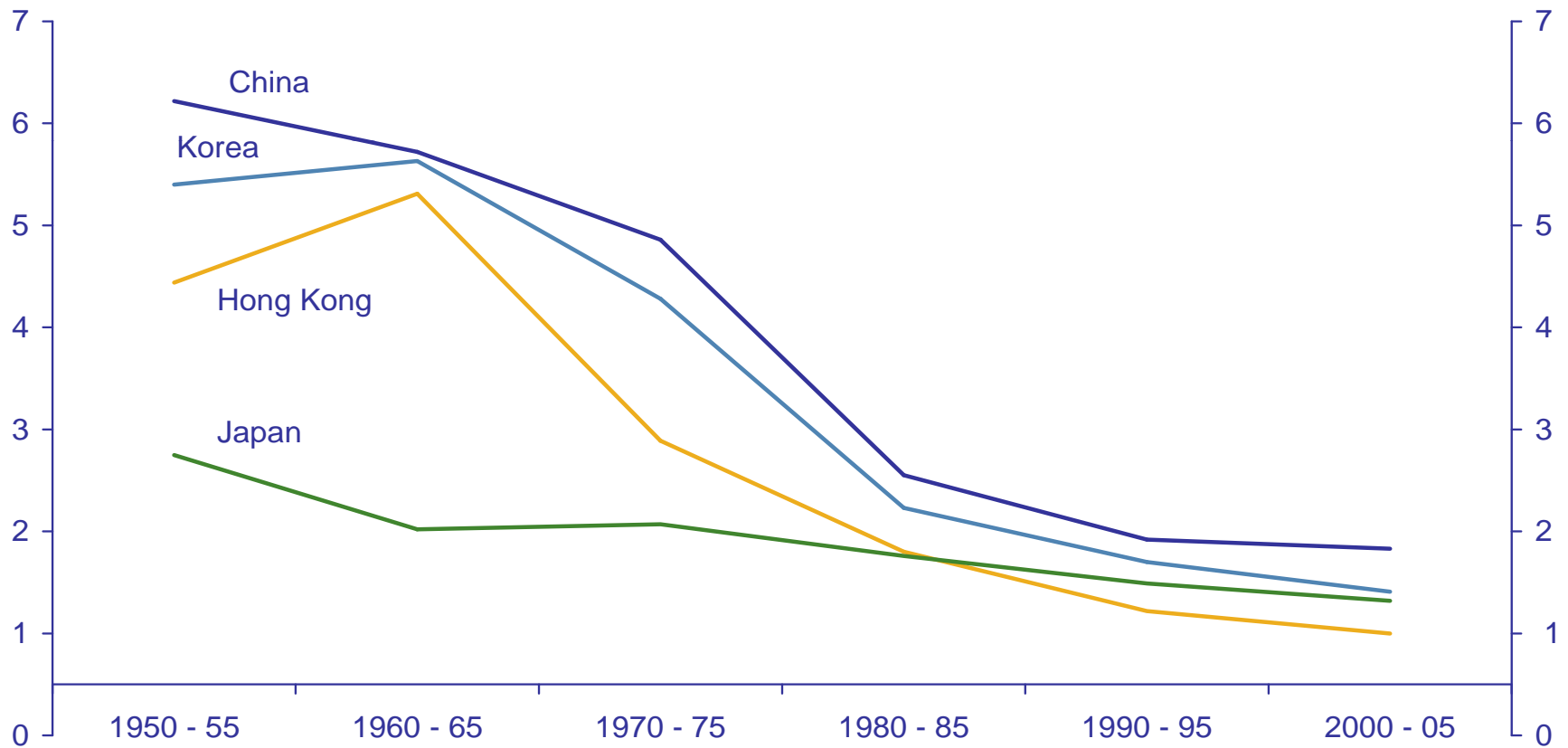
Labour Supply – Falling Birth Rates

- Birth rates need to be 2.1 in order to sustain population stability

- Canada: 1.61
- United States: 2.09
- Britain: 1.66
- Australia: 1.76
- New Zealand: 1.79

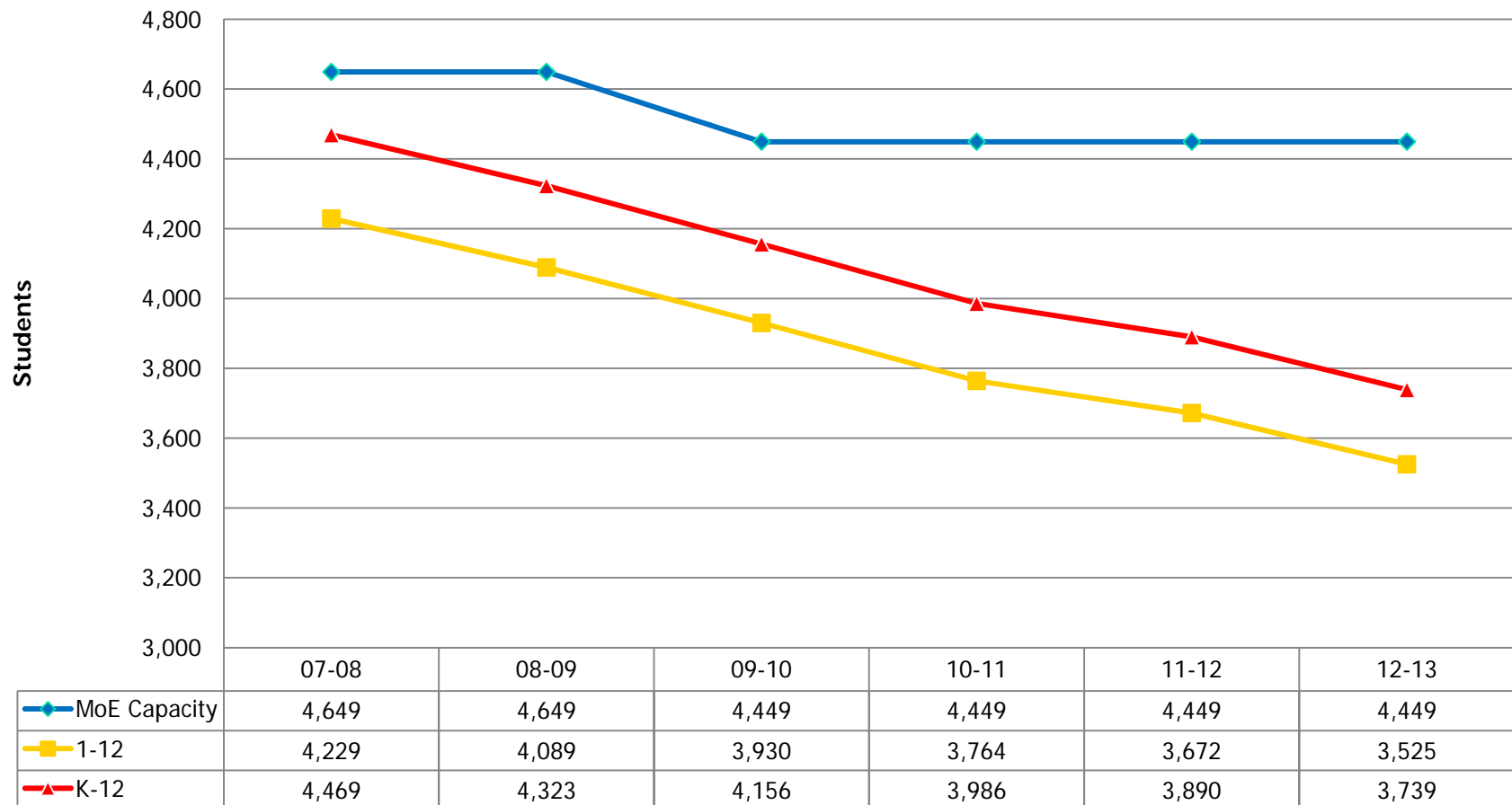
- Canada has the lowest fertility rate in the Anglosphere – 1/3 below viability level.
- Each generation in Canada is getting 1/3 smaller than the one before it.
- Physically & mathematically impossible to replace all exiting employees.
- Increased demand for CDNs from other Anglosphere nations with the same problem.

Total Fertility Rates – Asian Countries



SD 20 Capacity Utilization

SD20 Capacity Utilization





CASTLEGAR & AREA

MoE capacity: Total seats Gr. 1 – 12 = **1,751**

Student Decline from 2007/8 to 2012/13 by school

CP = -35

TR = -72

KE = +2

RCS = -32

OLL = -07

SHSS = -67

Total Decline = 211

Empty Seats = 187



TRAIL & AREA

MoE capacity: Total Seats Gr. 1 – 12 = **1,941**

Student Decline from 2007/8 to 2012/13 by school

FE = -125

GE = - 65

JLW = - 61

TMS = - 32

JLCSS = -123

Total Decline = 406

Empty Seats = 430

ROSSLAND & AREA

MoE capacity: Total seats Gr. 1 – 12 = **757**

Student Decline from 2007/8 to 2012/13 by school

MAC (1 – 5) = +10

RSS = -124

Total Decline = 114

Empty Seats = 331



SD 20 Capacity Utilization Grades 1 – 12 by 2012/13

	Empty Seats	Enrolment Decline
Castlegar & Area	187	211
Trail & Area	430	406
Rossland & Area	331	114
TOTALS	948	731



Instructional Pupil Teacher Ratio Secondary

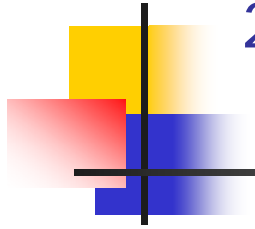
	2008/09	2009/10
Crowe	22.798	22.735
RSS	22.328	21.890
SHSS	22.554	22.618



Instructional Pupil Teacher Ratio Elementary

	2008/09	2009/10
Castlegar Primary	18.385	17.357
Twin Rivers Elementary	23.714	24.500
Fruitvale Elementary	23.311	21.389
Glenmerry Elementary	21.473	20.426
Kinnaird Elementary	21.395	22.173
MacLean Elementary	20.465	22.035
Robson Community	20.791	20.842
J.L. Webster Elementary	19.473	23.449

SD 20 Enrolment & Funding History & Projections 2002-2012 K - 12



	<u>Headcount</u>	<u>Funded FTE</u>
2002/2003	5,220	5,039
2007/2008	4,431	4,246
Decrease	-789	-793
2007/2008	4,431	4,246
2012/2013	3,608	3,519
Decrease	- 823	- 727

Funding decrease: 727 FTE x \$5,851 = \$4,253,677



District Funding Information

- Fully dependent on Ministry of Education
- Lack of Ministry Consultation
 - Funding formula changes
 - Annual facilities grant
 - Funding protection
- Based on Student FTE
- Capital vs Operating Budgets



Provincial Funding Pressures

- Ministry increase of **37 Million** for 2010/11
- District Funding Pressures of **157.6 Million**
 - Salary, Benefit & Pension Increases \$ 66.7 M
 - Trades Salary Adjustment \$ 3.3 M
 - Full Day K \$ 44.0 M
 - HST \$ 32.0 M
 - MSP Premiums \$ 2.8 M
 - Carbon Tax & SMARTTool \$ 6.4 M
 - Hydro Rate Increase \$ 2.4 M

Provincial **SHORTFALL** of **120.6 Million**

District **SHORTFALL** of **1 Million**



SD 20 Other Information

- District “Surplus”
- Number of Trustees
- Inability to use capital funds for annual operating budgets



Planning for the Future

Summary of Facts

Over the next five years

Enrolment will decrease by > 800 students

Budget will decrease by > \$4 Million

Used space will decrease by > 13%

(from 90.9% to 77.6%)



Planning for the Future

Opportunities & Options

- How can we continue to fund quality programs by reducing or making better use of available/empty space?
 - school reconfigurations in Castlegar & area, Rossland & area, and Greater Trail
 - elementary language program location(s)



Planning for the Future

Opportunities & Options

How can we continue to fund quality programs by reducing or making better use of available/empty space?

- reconfiguration/location of alternate education programs
- consolidation of operations & transportation facilities
- Sunningdale, MacLean Annex, board office sites



Planning for the Future

Expanded Mandate

K – 12 Educational Program

- Community schools
- Early learning
- StrongStart
- Youth programs
- Adult literacy
- Seniors literacy
- All day Kindergarten
- Potentially programs for 4 and 3 year olds



Planning for the Future

Expanded Mandate

Neighbourhoods of Learning

- School buildings and property can become centres for delivering education and community services that meet the needs of communities – **alternative community use.**



Planning for the Future

Expanded Mandate

Neighbourhoods of Learning

alternative community use

For example:

Early learning, child care services, adult and industry training programs, family resource centres, seniors' centres, public libraries, health care and therapy services, local social services, community recreation programs, college programs, theatre, independent schools, etc.

Planning for the Future



This is our opportunity – district & communities – to work together to define our own future!

Planning for the Future



Next Steps

Presented by The Board of Education of School District No. 20 (Kootenay-Columbia), January 2010



Planning for the Future: Next Steps

- Receive oral or written questions
- Record questions and answers on our web site
- Receive written submissions for future directions and post on web site



Planning for the Future:

Next Steps

- Explore the viability and feasibility of all suggestions
- Hold another round of meetings with all groups to share a draft plan and obtain further feedback
- Decide on our five year facilities plan for the future



Planning for the Future

Providing Input

- Drop off your questions or written submission at your neighbourhood school for forwarding to the school board office.
- E-mail questions or submissions to:
dnicoletti@sd20.bc.ca
- View the two “Planning for the Future” documents, power points, questions & answers, & submissions at: www.sd20.bc.ca